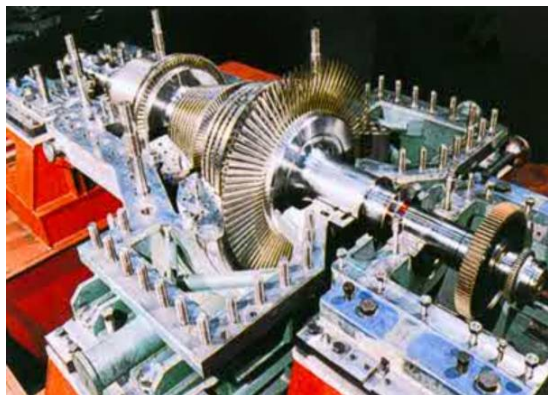


## Laser Alignment Service



### SHAFT MISALIGNMENT HAS BEEN PROVEN TO BE ONE OF THE MAIN CAUSES OF MACHINE FAILURE!

Shaft misalignment quite often results in one or more of the following:

- Increased vibration levels
- Premature bearing wear or resulting in failure
- Premature wear of the coupling
- Excessive wear of sealing components
- Higher energy consumption



These problems can be prevented by ensuring proper and accurate shaft alignment, which increase machine availability and reduce maintenance and operating costs.

IPS Australia offer a laser alignment service which is carried out by our field service personnel, who are not only highly trained in the use of laser alignment technology, but are also rotating equipment specialists.

IPS Australia uses the Rotalign Pro laser alignment system. For further information contact Geoff Yeoman on +61 2 9981 2000 or see our webpage at [www.ipsaus.com.au](http://www.ipsaus.com.au)

#### Industrial Plant & Service Australia Pty Ltd

99a South Creek Road, Dee Why NSW 2099, Sydney Australia

Tel.: +61 (2) 9981 2000, Fax: +61 (2) 9981 4111, E-mail: [adm@ipsaus.com.au](mailto:adm@ipsaus.com.au)

Authorised Service & Repair for:



MAN Turbo | PrimeServ

